

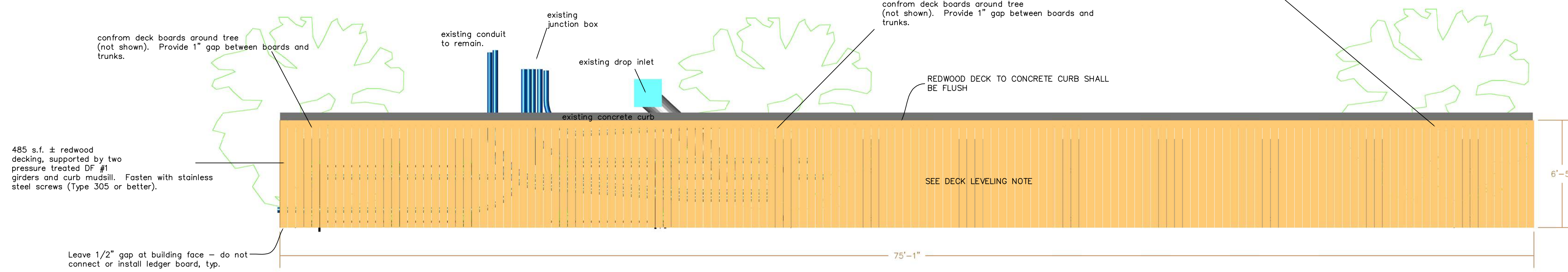
REDWOOD DECK

1. Construct approximately 485 s.f. ± of decking. Use 2x6 Redwood No. 1, single pieces – no splicing.
2. Use 3" stainless steel screw fasteners (Type 305 or better), drive to be specified by Sierra County Public Works.
3. Provide 1/4" spacing between boards, UON by Sierra County Public Works.

MAIN STREET

REDWOOD DECK PLAN VIEW

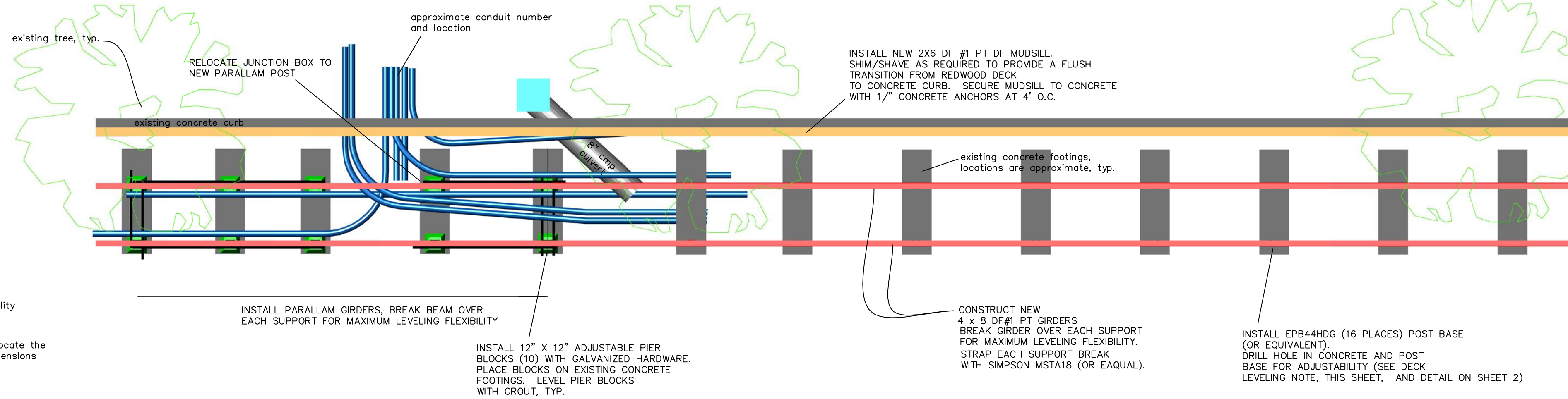
SCALE: 1" = 4'



REDWOOD DECK LEVELING NOTE:
 POSTS ARE SUPPORTED BY ADJUSTABLE BASES TO FACILITATE DECK LEVELING TO CONFORM TO DOOR THRESHOLDS AS MUCH AS POSSIBLE AND STILL MAINTAIN A TRANSVERSE CROSS SLOPE OF LESS THAN 1.5% TO THE EXISTING CONCRETE CURB AND A LONGITUDINAL SLOPE NOT TO EXCEED 1.5%.

DECK SUPPORT PLAN VIEW

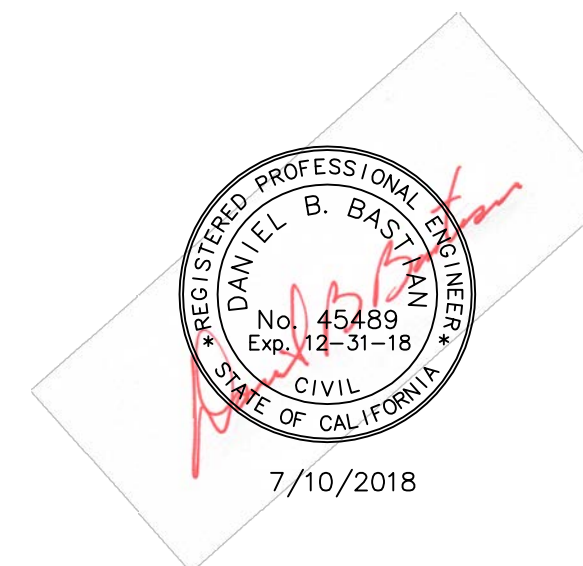
SCALE: 1" = 4'



- NOTES:**
1. Existing conduit may be moved with serving utility approval, otherwise, construct the deck support to accommodate the current conduit locations.
 2. All dimensions shown are approximate. Field locate the footings, conduit, curb and building and adjust dimensions accordingly.

DECK SUPPORT PLAN VIEW

SCALE: 1" = 4'



SIERRA COUNTY
 BOARDWALK IMPROVEMENTS
 DOWNIEVILLE

WITHIN SECTION 35 OF T.20N., R.11E., M.D.B.M.

SIERRA COUNTY
 DEPARTMENT OF PUBLIC WORKS
 AND TRANSPORTATION

101 COURT HOUSE SQUARE
 P.O. BOX 98 DOWNIEVILLE, CA. 95936 (530) 289-3201

DATE: 7/2018

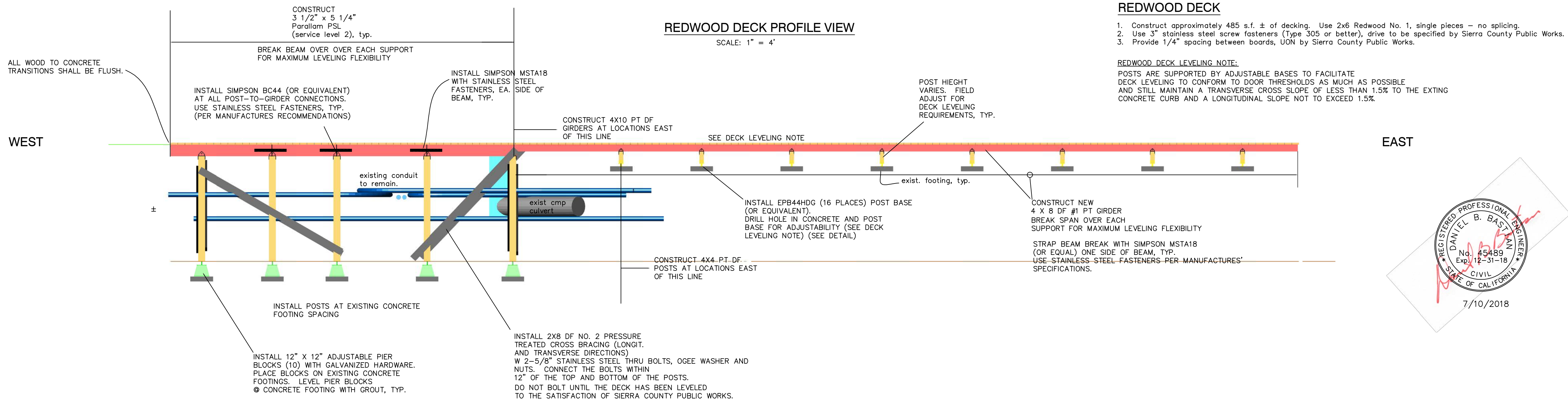
DRAWN BY: DB

SCALE: AS NOTED

REVISIONS:

DRAWING NO.

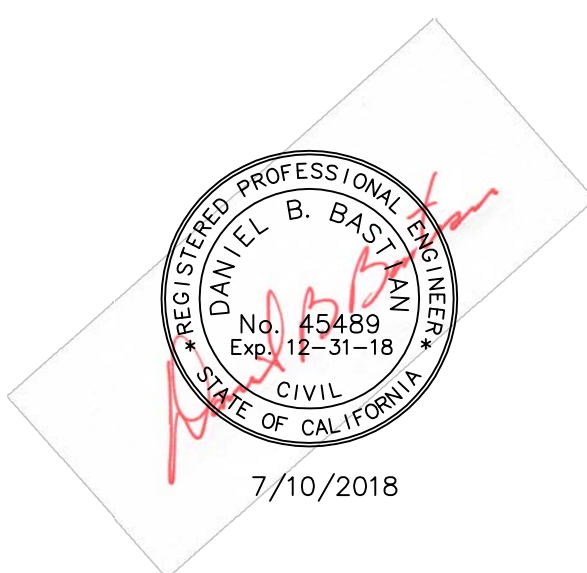
1 OF 2



REDWOOD DECK

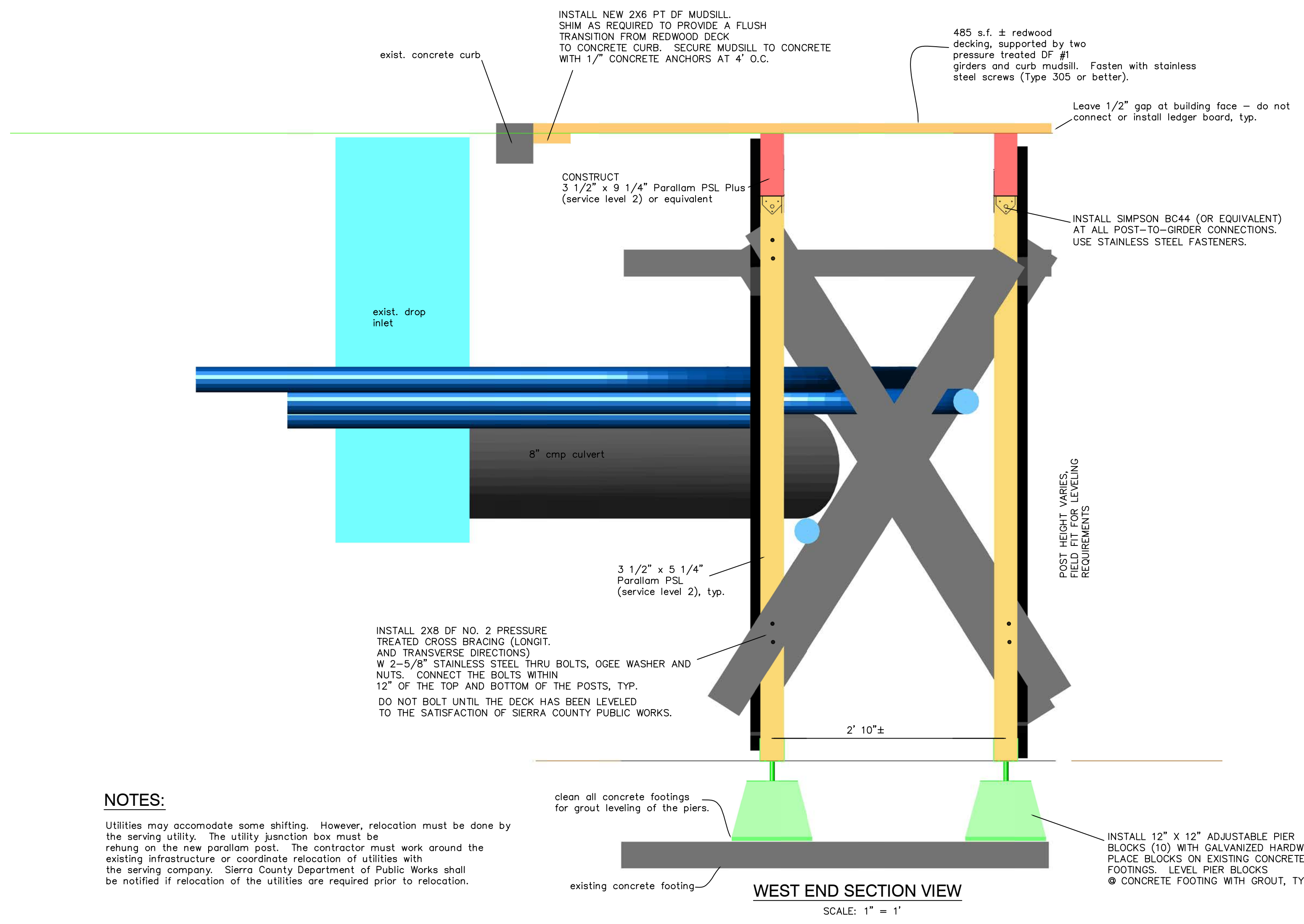
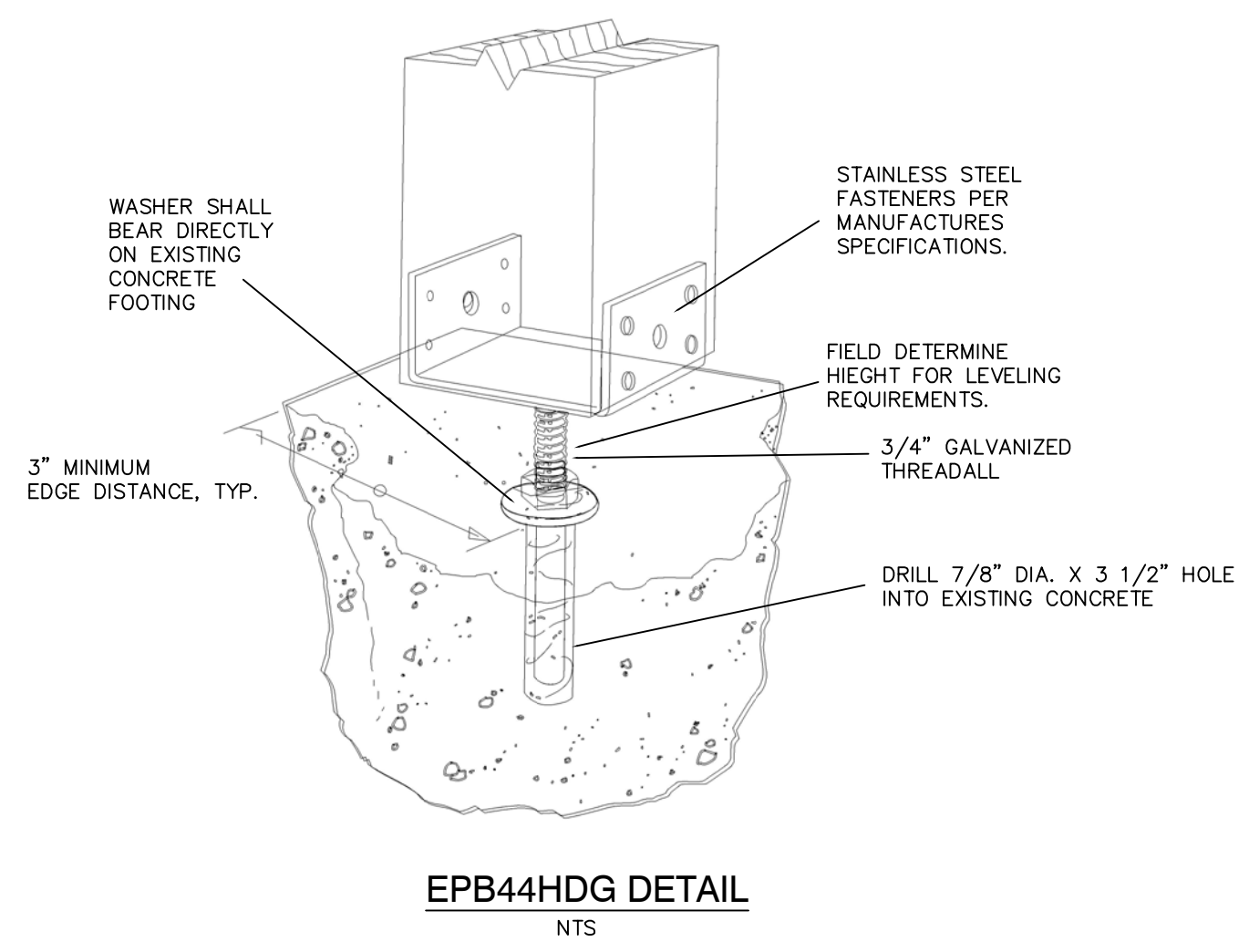
1. Construct approximately 485 s.f. ± of decking. Use 2x6 Redwood No. 1, single pieces – no splicing.
2. Use 3" stainless steel screw fasteners (Type 305 or better), drive to be specified by Sierra County Public Works.
3. Provide 1/4" spacing between boards, UON by Sierra County Public Works.

REDWOOD DECK LEVELING NOTE:
 POSTS ARE SUPPORTED BY ADJUSTABLE BASES TO FACILITATE DECK LEVELING TO CONFORM TO DOOR THRESHOLDS AS MUCH AS POSSIBLE AND STILL MAINTAIN A TRANSVERSE CROSS SLOPE OF LESS THAN 1.5% TO THE EXISTING CONCRETE CURB AND A LONGITUDINAL SLOPE NOT TO EXCEED 1.5%.



GENERAL NOTES:

1. COMPLY WITH ALL PROVISIONS OF THE 2013 CBC, CRC, CPC, CMC, CEC, TITLE 2 ; AND ALL STATE, FEDERAL AND LOCAL CODE AND ORDINANCES.
2. THESE PLANS ARE NOT INTENDED TO SHOW THE METHOD AND MEANS OF EXECUTION OF THE WORK WHICH IS THE RESPONSIBILITY OF THE GENERAL CONTRACTOR.
3. IT IS THE RESPONSIBILITY OF THE GENERAL CONTRACTOR TO ENSURE FULL COMPLIANCE WITH ALL APPLICABLE CODES AND ORDINANCES. ALL SUBCONTRACTORS SHALL BID AND PERFORM THEIR WORK BASED ON THE COMPLETE SET OF PLANS. IT IS THE RESPONSIBILITY OF THE SUBCONTRACTOR TO NOTIFY THE GENERAL CONTRACTOR OF ANY POSSIBLE CONFLICTS BETWEEN PORTIONS OF THE DRAWINGS AND/OR SPECIFICATIONS.
4. IT IS THE RESPONSIBILITY OF THE GENERAL CONTRACTOR TO REVIEW AND FAMILIARIZE HIMSELF WITH THE DRAWINGS, SPECIFICATIONS AND SITE CONDITIONS PRIOR TO STARTING CONSTRUCTION. IT IS THE RESPONSIBILITY IF THE GENERAL CONTRACTOR TO CONTACT THE DEPARTMENT OF PUBLIC WORKS, PRIOR TO PERFORMANCE, AND NOTIFY THE DEPARTMENT OF PUBLIC WORKS IF ANY CONFLICTS EXIST BETWEEN ANY PORTION OF THE DRAWINGS, SPECIFICATIONS AND/OR SITE CONDITIONS.
5. DIMENSIONS SHOWN ON THE DRAWINGS ARE APPROXIMATE. CONSTRUCTION SHALL BE GOVERNED BY THE FIELD DIMENSIONS. ANY DISCREPANCIES OR CONFLICTS SHALL BE BROUGHT TO THE ATTENTION OF THE DEPARTMENT OF PUBLIC WORKS. ALL DIMENSIONS RELATED TO EXISTING CONDITIONS SHALL BE VERIFIED BY THE CONTRACTOR.
6. DETAILS NOT SPECIFICALLY SHOWN SHALL BE THE SAME NATURE AS SIMILAR CONDITIONS.
7. COORDINATE WITH SIERRA COUNTY DEPARTMENT OF PUBLIC WORKS FOR TRAFFIC CONTROL AND PEDESTRIAN ACCESS CLOSURE. THE CONTRACTOR SHALL PROVIDE ALL SAFETY EQUIPMENT, SIGNS, BARRICADES ETC. NECESSARY FOR PUBLIC SAFETY AT ALL TIMES.
8. THE CONTRACTOR SHALL COMPLY WITH ALL OSHA STANDARDS FOR BOTH EMPLOYEES AND THE GENERAL PUBLIC. OSHA CONFINED SPACE REQUIREMENTS APPLY FOR THIS WORK. THE CONTROLLING CONTRACTOR SHALL COMPLY WITH SUBPART AA OF 29 CFR 1926. ONLY WORKERS WHO HAVE BEEN ASSIGNED AND TRAINED TO WORK IN CONFINED SPACE MAY DO SO. ADDITIONALLY, BEFORE WORKERS CAN ENTER A PERMITTED SPACE, THE EMPLOYER HAS TO WRITE A PERMIT THAT SPECIFIES WHAT SAFETY MEASURES MUST BE TAKEN AND WHO IS ALLOWED TO GO IN.
9. THE CONTRACTOR SHALL INCLUDE DELAY TIME FOR UTILITY RELOCATION IN THE LUMP SUM AMOUNT.



NOTES:
 Utilities may accommodate some shifting. However, relocation must be done by the serving utility. The utility junction box must be rehung on the new parallel post. The contractor must work around the existing infrastructure or coordinate relocation of utilities with the serving company. Sierra County Department of Public Works shall be notified if relocation of the utilities are required prior to relocation.

SIERRA COUNTY
 BOARDWALK IMPROVEMENTS
 DOWNIEVILLE

SIERRA COUNTY
 DEPARTMENT OF PUBLIC WORKS
 AND TRANSPORTATION
 101 COURT HOUSE SQUARE
 P.O. BOX 98 DOWNIEVILLE, CA. 95936 (530) 289-3201

DATE: 7/2018
DRAWN BY: DB
SCALE: AS NOTED
REVISIONS:
DRAWING NO. 1 OF 2