

Sierra County Courthouse Main Floor

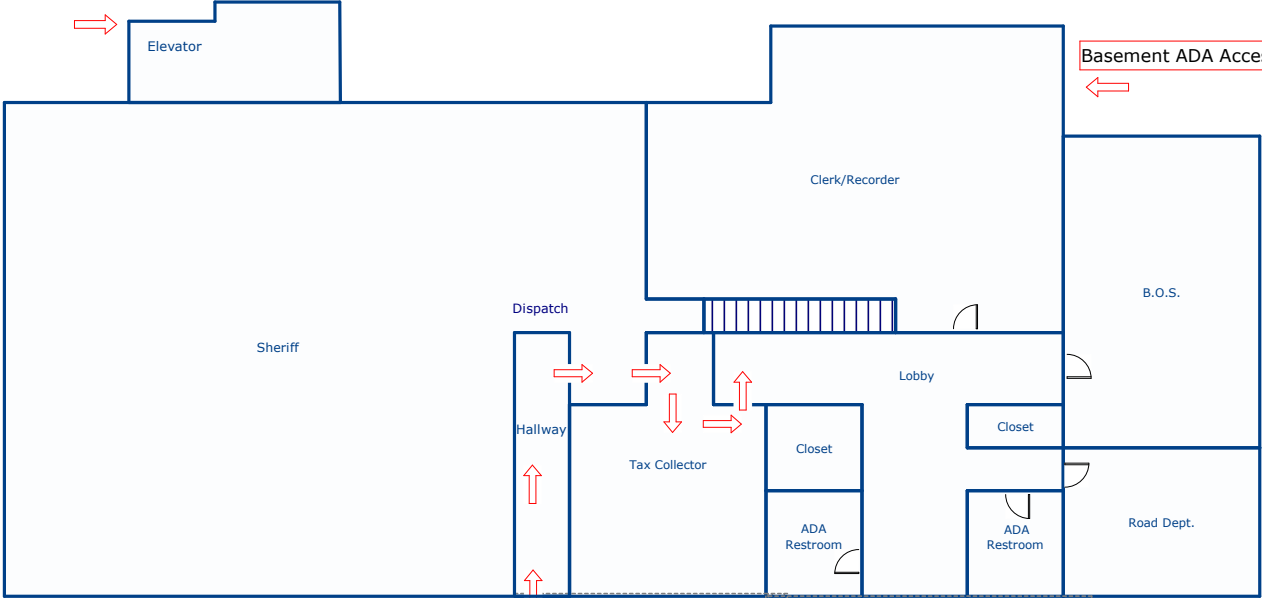
Second Floor ADA Access



Basement ADA Access

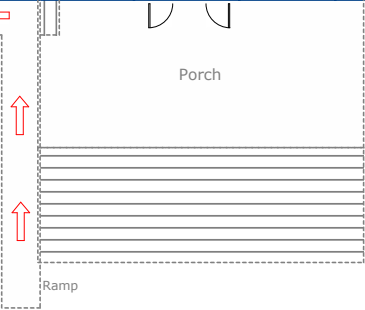


Handicap Parking

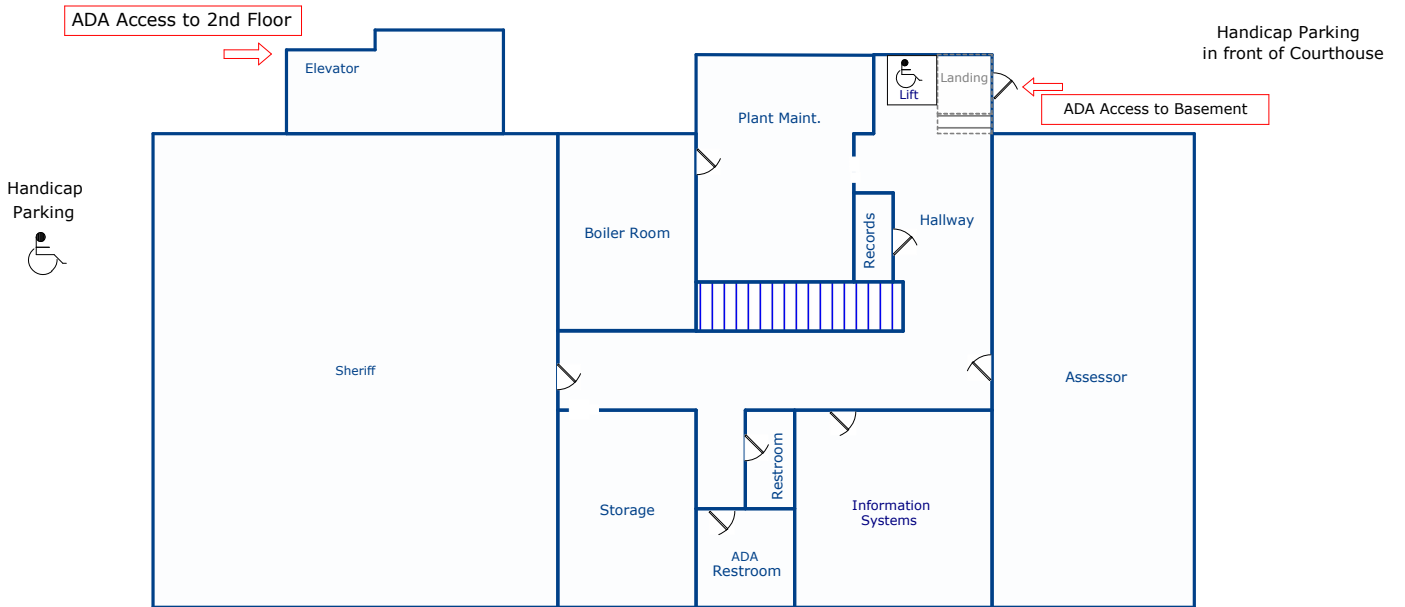


Main Floor ADA Access

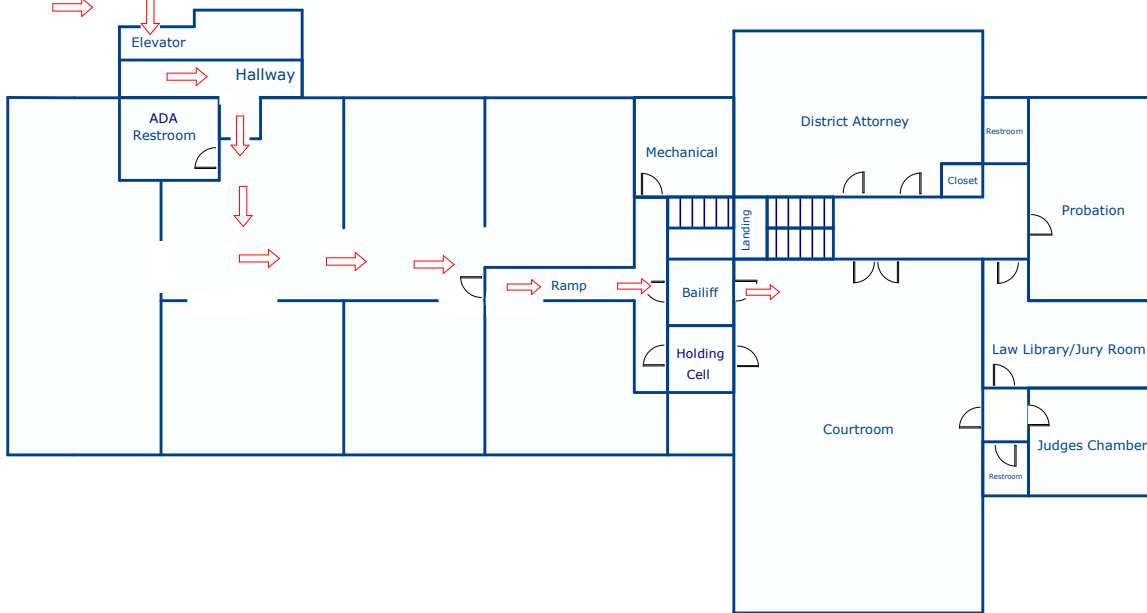
Handicap Parking



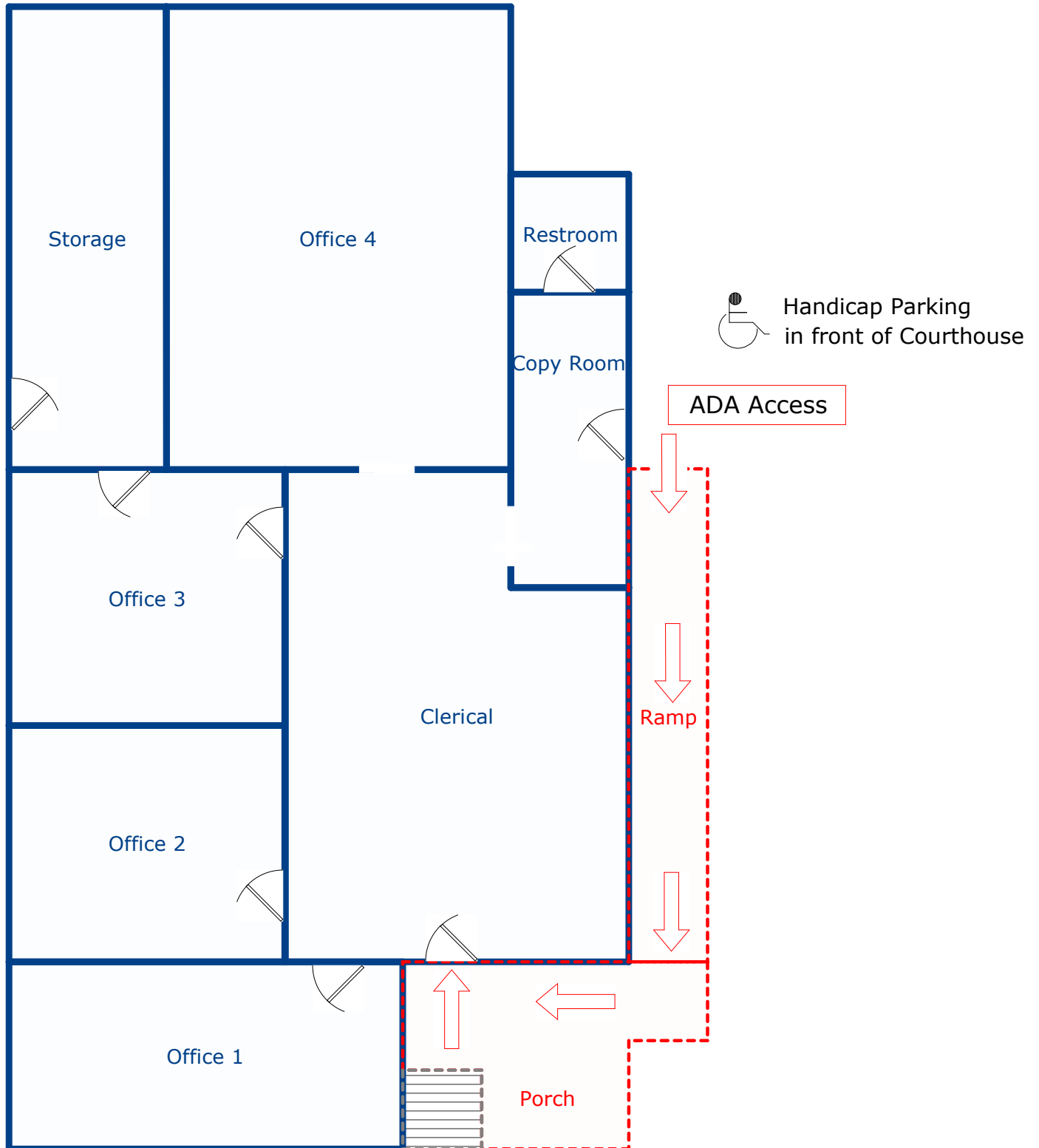
Courthouse Basement



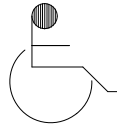
Second Floor ADA Access



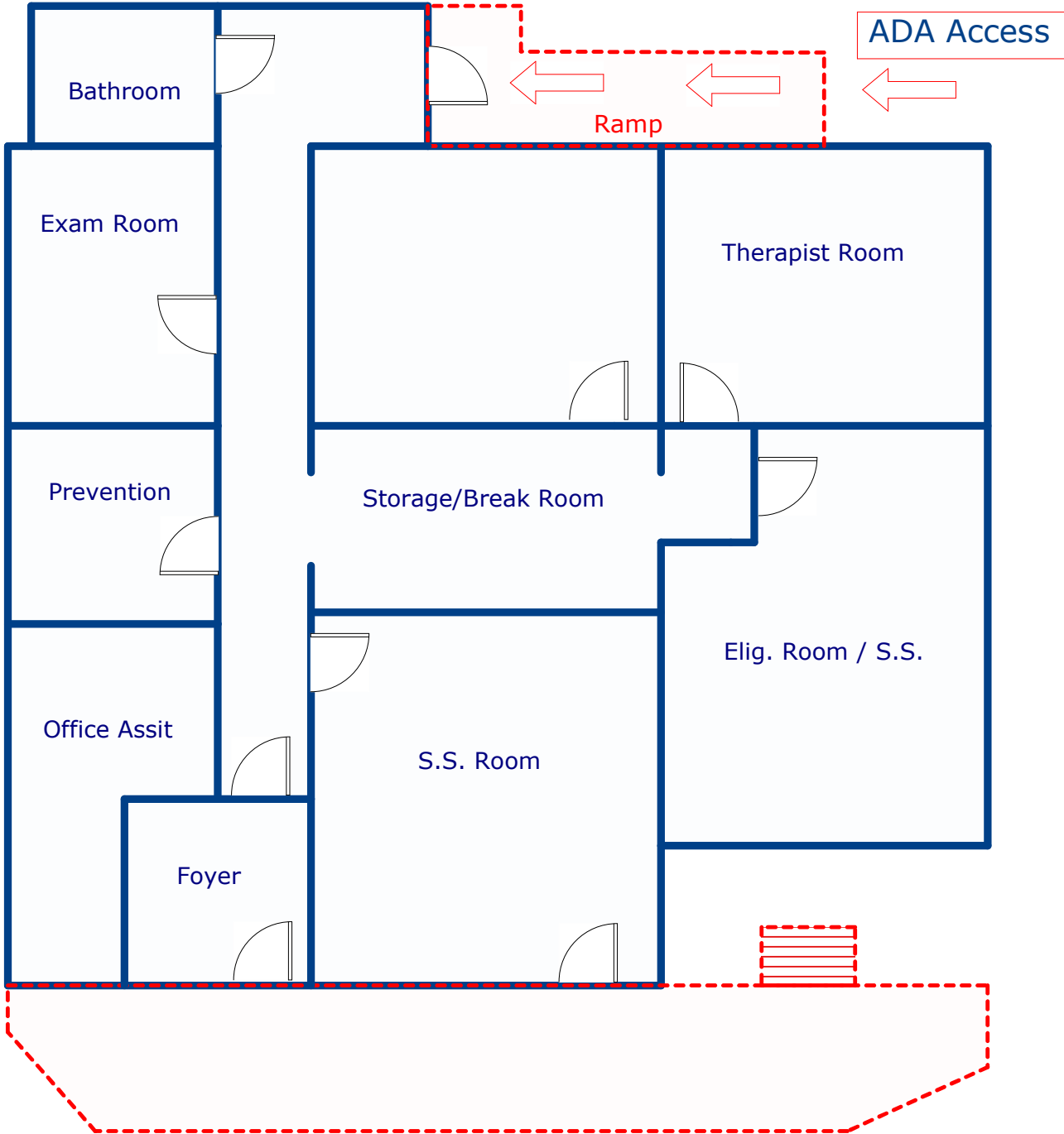
Public Works, Building & Planning



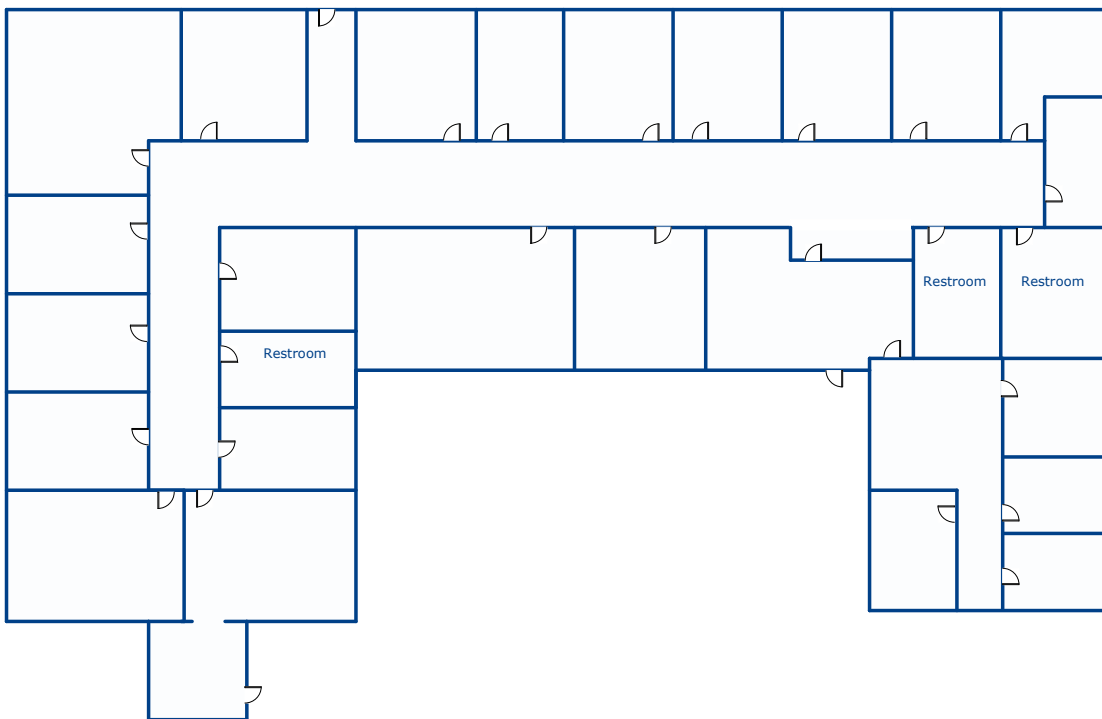
Human Services - Downieville



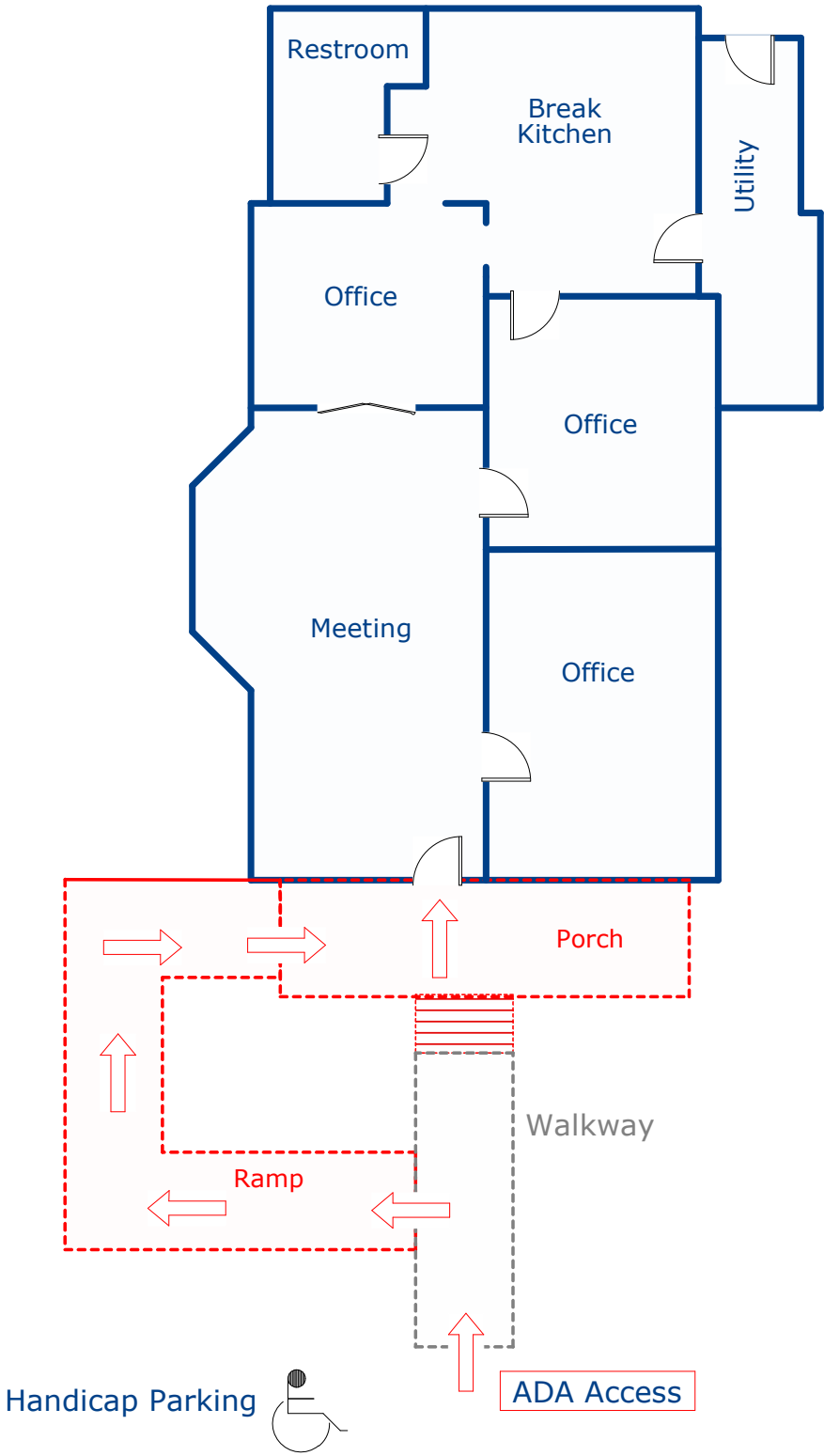
Handicap Parking



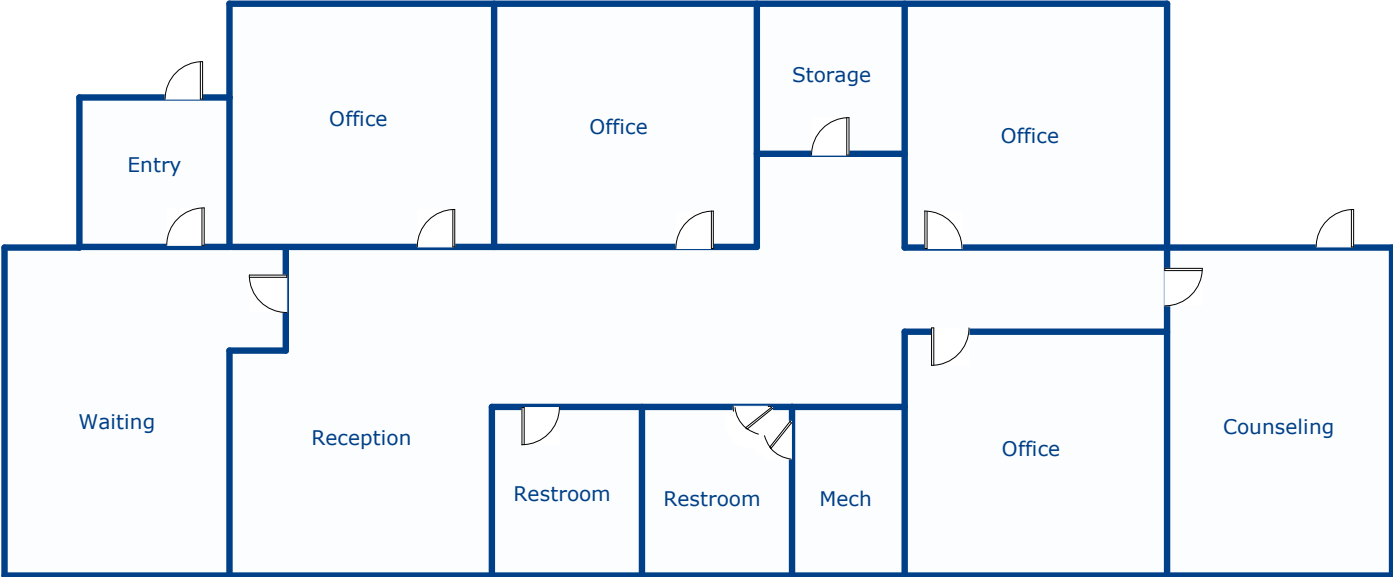
202 Front St.
Loyalton



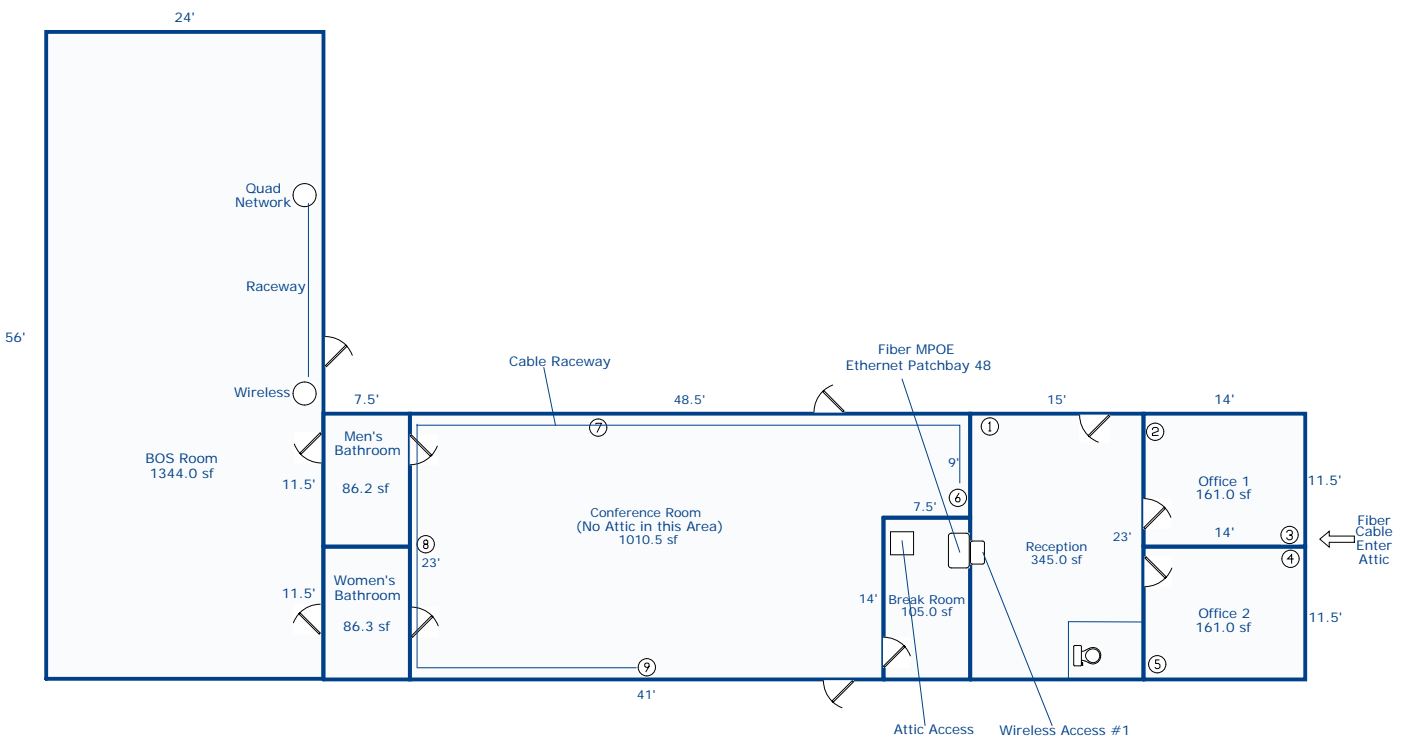
207 Front St. Loyalton



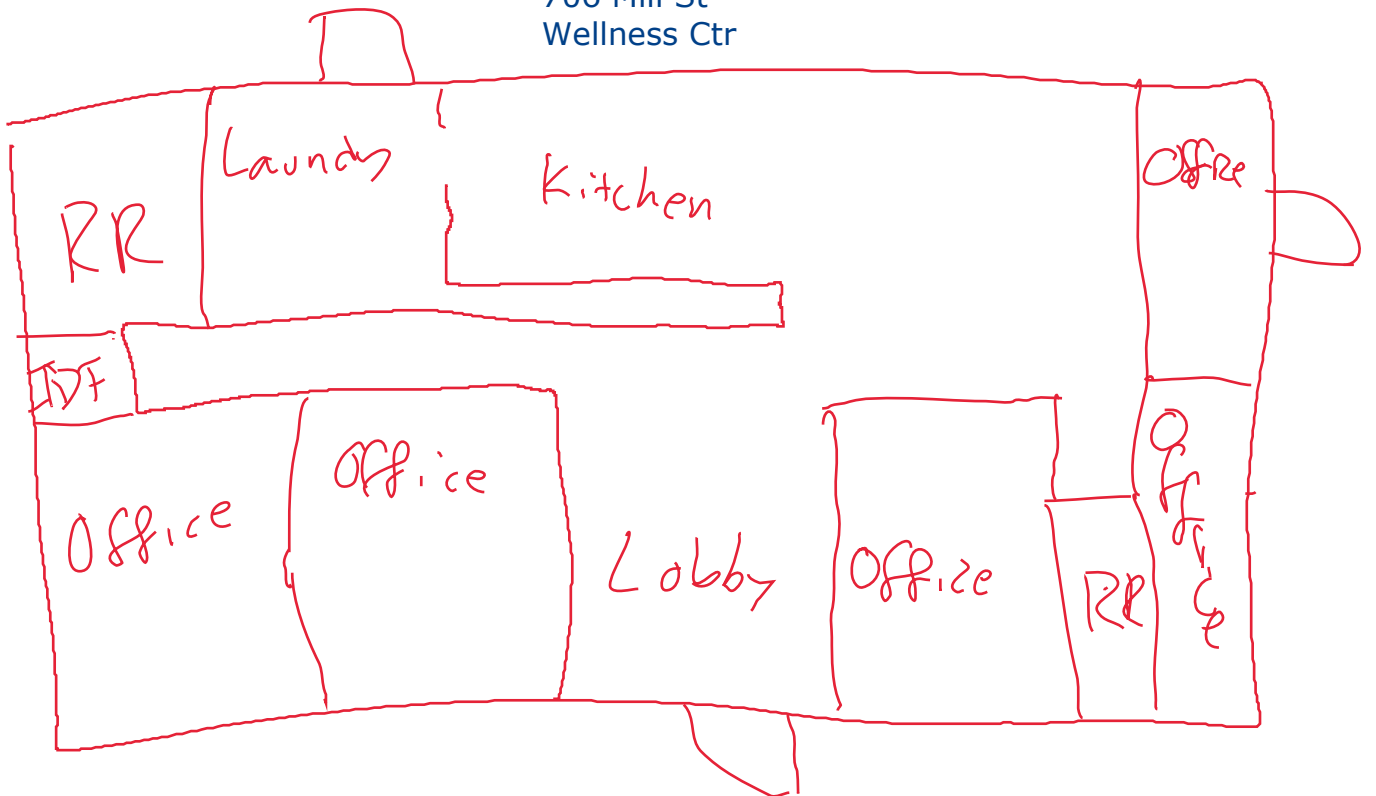
704 Mill St
Loyalton



Probation



706 Mill St
Wellness Ctr



Substation

